

POLEAS DENTADAS HTD

HTD timing belt pulleys

Poulies dentées HTD

3M-09

mm

Paso

3

Pitch

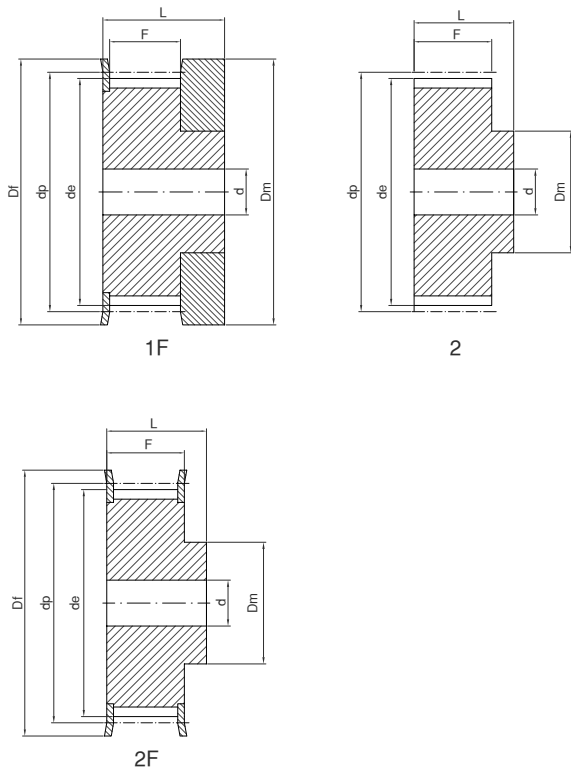
Pas

Para correas de ancho

9

For belt width

Pour courroies largeur



Ref.	Material	Z	dp	de	Df	Dm	F	L	d	Fig.	Kg.
103M09	Al	10	9,55	8,79	13,0	12,0	10,2	17,5		1F	0,01
123M09	Al	12	11,46	10,70	15,0	15,0	10,2	17,5		1F	0,01
143M09	Al	14	13,37	12,61	16,0	16,0	10,2	17,5		1F	0,01
153M09	Al	15	14,32	13,56	18,0	17,5	10,2	17,5		1F	0,01
163M09	Al	16	15,28	14,52	18,0	10,0	12,8	20,6	4	2F	0,01
183M09	Al	18	17,19	16,43	19,5	11,0	12,8	20,6	6	2F	0,01
203M09	Al	20	19,10	18,34	23,0	13,0	12,8	20,6	6	2F	0,01
213M09	Al	21	20,05	19,29	25,0	14,0	12,8	20,6	6	2F	0,01
223M09	Al	22	21,01	20,25	25,0	14,0	12,8	20,6	6	2F	0,01
243M09	Al	24	22,92	22,16	25,0	14,0	12,8	20,6	6	2F	0,02
263M09	Al	26	24,83	24,07	28,0	16,0	12,8	20,6	6	2F	0,02
283M09	Al	28	26,74	25,98	32,0	18,0	12,8	20,6	6	2F	0,02
303M09	Al	30	28,65	27,89	32,0	20,0	12,8	20,6	6	2F	0,03
323M09	Al	32	30,56	29,80	36,0	22,0	12,8	20,6	6	2F	0,03
363M09	Al	36	34,38	33,62	38,0	26,0	13,4	22,2	6	2F	0,05
403M09	Al	40	38,20	37,44	42,0	28,0	13,4	22,2	6	2F	0,06
443M09	Al	44	42,02	41,26	48,0	33,0	13,4	22,2	6	2F	0,07
483M09	Al	48	45,84	45,08		33,0	13,4	22,2	8	2	0,11
603M09	Al	60	57,30	56,54		33,0	13,4	22,2	8	2	0,11
723M09	Al	72	68,76	68,00		33,0	13,4	22,2	8	2	0,15

Material: Aluminio/Aluminium UNI 9006 - T6 (Al)

POLEAS DENTADAS HTD

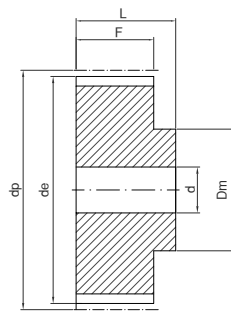
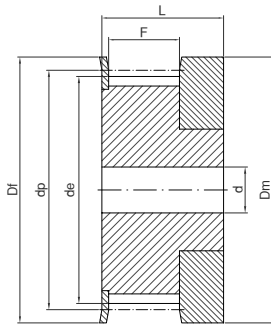
HTD timing belt pulleys

Poulies dentées HTD

3M-09 mm

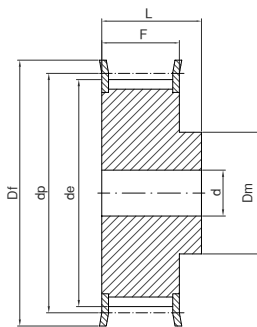
Paso Pitch Pas 3

Para correas de ancho 15
For belt width
Pour courroies largeur



1F

2



2F

Ref.	Material	Z	dp	de	Df	Dm	F	L	d	Fig.	Kg.
103M15	Al	10	9,55	8,79	13,0	12,0	17,0	26,0		1F	0,01
123M15	Al	12	11,46	10,70	15,0	15,0	17,0	26,0		1F	0,01
143M15	Al	14	13,37	12,61	16,0	16,0	17,0	26,0		1F	0,01
153M15	Al	15	14,32	13,56	18,0	17,5	17,0	26,0		1F	0,01
163M15	Al	16	15,28	14,52	18,0	10,0	19,5	26,0	4	2F	0,01
183M15	Al	18	17,19	16,43	19,5	11,0	19,5	26,0	6	2F	0,01
203M15	Al	20	19,10	18,34	23,0	13,0	19,5	26,0	6	2F	0,01
213M15	Al	21	20,05	19,29	25,0	14,0	19,5	26,0	6	2F	0,02
223M15	Al	22	21,01	20,25	25,0	14,0	19,5	26,0	6	2F	0,02
243M15	Al	24	22,92	22,16	25,0	14,0	19,5	26,0	6	2F	0,02
263M15	Al	26	24,83	24,07	28,0	16,0	19,5	26,0	6	2F	0,03
283M15	Al	28	26,74	25,98	32,0	18,0	19,5	26,0	6	2F	0,03
303M15	Al	30	28,65	27,89	32,0	20,0	19,5	26,0	6	2F	0,04
323M15	Al	32	30,56	29,80	36,0	22,0	19,5	26,0	6	2F	0,04
363M15	Al	36	34,38	33,62	38,0	26,0	20,0	30,0	6	2F	0,06
403M15	Al	40	38,20	37,44	42,0	28,0	20,0	30,0	6	2F	0,08
443M15	Al	44	42,02	41,26	48,0	33,0	20,0	30,0	6	2F	0,10
483M15	Al	48	45,84	45,08		33,0	20,0	30,0	8	2	0,10
603M15	Al	60	57,30	56,54		33,0	20,0	30,0	8	2	0,15
723M15	Al	72	68,76	68,00		33,0	20,0	30,0	8	2	0,21

Material: Aluminio/Aluminium UNI 9006 - T6 (Al)

POLEAS DENTADAS HTD

HTD timing belt pulleys

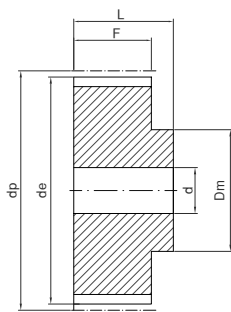
Poulies dentées HTD

5M-09

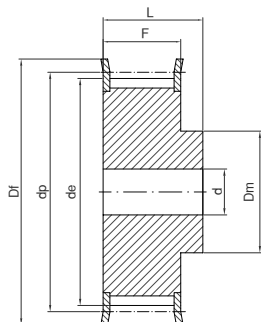
mm

Paso 5
Pitch 5
Pas 5

Para correas de ancho 9
For belt width 9
Pour courroies largeur 9



2



2F

Ref.	Material	Z	dp	de	Df	Dm	F	L	d	Fig.	Kg.
125M09	St	12	19,10	17,96	23	12,5	14,5	20,0	6	2F	0,03
145M09	St	14	22,28	21,14	25	13,5	14,5	20,0	6	2F	0,04
155M09	St	15	23,87	22,73	28	16,0	14,5	20,0	6	2F	0,05
165M09	St	16	25,46	24,32	28	16,5	14,5	20,0	6	2F	0,06
185M09	St	18	28,65	27,51	32	20,0	14,5	20,0	6	2F	0,07
205M09	St	20	31,83	30,69	36	23,0	14,5	22,5	6	2F	0,10
215M09	St	21	33,42	32,28	38	24,0	14,5	22,5	6	2F	0,12
225M09	St	22	35,01	33,87	38	25,5	14,5	22,5	6	2F	0,13
245M09	St	24	38,20	37,06	42	27,0	14,5	22,5	6	2F	0,15
265M09	St	26	41,38	40,24	44	30,0	14,5	22,5	6	2F	0,18
285M09	St	28	44,56	43,42	48	30,5	14,5	22,5	6	2F	0,21
305M09	St	30	47,75	46,60	51	35,0	14,5	22,5	6	2F	0,25
325M09	St	32	50,93	49,79	54	38,0	14,5	22,5	8	2F	0,28
365M09	St	36	57,30	56,16	60	38,0	14,5	22,5	8	2F	0,33
405M09	St	40	63,66	62,52	71	38,0	14,5	22,5	8	2F	0,42
445M09	Al	44	70,03	68,89		38,0	14,5	25,5	8	2	0,17
485M09	Al	48	76,39	75,25		45,0	14,5	25,5	8	2	0,18
605M09	Al	60	95,49	94,35		45,0	14,5	25,5	8	2	0,23
725M09	Al	72	114,59	113,45		45,0	14,5	25,5	8	2	0,42

Material: Acero/Steel/Acier (St)
Material: Aluminio/Aluminium UNI 9006 - T6 (Al)

POLEAS DENTADAS HTD

HTD timing belt pulleys

Poulies dentées HTD

5M-15

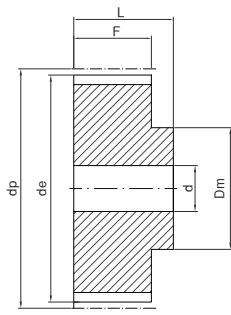
mm

Paso
Pitch
Pas

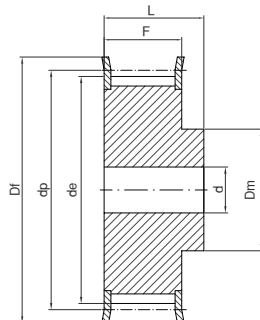
5

Para correas de ancho
For belt width
Pour courroies largeur

15



2



2F

Ref.	Material	Z	dp	de	Df	Dm	F	L	d	Fig.	Kg.
125M15	St	12	19,10	17,96	23	12,5	20,5	26	6	2F	0,03
145M15	St	14	22,28	21,14	25	13,5	20,5	26	6	2F	0,04
155M15	St	15	23,87	22,73	28	16,0	20,5	26	6	2F	0,05
165M15	St	16	25,46	24,32	28	16,5	20,5	26	6	2F	0,06
185M15	St	18	28,65	27,51	32	20,0	20,5	26	6	2F	0,09
205M15	St	20	31,83	30,69	36	23,0	20,5	26	6	2F	0,12
215M15	St	21	33,42	32,28	38	24,0	20,5	26	6	2F	0,14
225M15	St	22	35,01	33,87	38	25,5	20,5	26	6	2F	0,15
245M15	St	24	38,20	37,06	42	27,0	20,5	28	6	2F	0,19
265M15	St	26	41,38	40,24	44	30,0	20,5	28	6	2F	0,23
285M15	St	28	44,56	43,42	48	30,5	20,5	28	6	2F	0,26
305M15	St	30	47,75	46,60	51	35,0	20,5	28	6	2F	0,32
325M15	St	32	50,93	49,79	54	38,0	20,5	28	8	2F	0,35
365M15	St	36	57,30	56,16	60	38,0	20,5	28	8	2F	0,43
405M15	St	40	63,66	62,52	71	38,0	20,5	28	8	2F	0,52
445M15	Al	44	70,03	68,89		38,0	20,5	30	8	2	0,23
485M15	Al	48	76,39	75,25		38,0	20,5	30	8	2	0,29
605M15	Al	60	95,49	94,35		50,0	20,5	30	8	2	0,30
725M15	Al	72	114,59	113,45		50,0	20,5	30	8	2	0,59

Material: Acero/Steel/Acier (St)

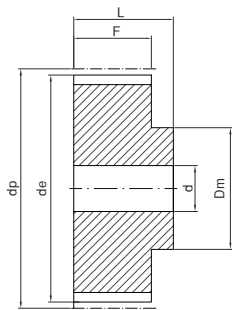
Material: Aluminio/Aluminium UNI 9006 - T6 (Al)

POLEAS DENTADAS HTD
HTD timing belt pulleys
Poulies dentées HTD

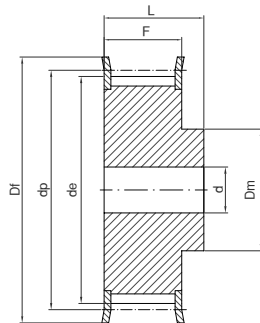
5M-25 mm

Paso 5
Pitch
Pas

Para correas de ancho 25
For belt width
Pour courroies largeur



2



2F

Ref.	Material	Z	dp	de	Df	Dm	F	L	d	Fig.	Kg.
125M25	St	12	19,10	17,96	23	12,5	30,5	36	6	2F	0,05
145M25	St	14	22,28	21,14	25	13,5	30,5	36	6	2F	0,08
155M25	St	15	23,87	22,73	28	16,0	30,5	36	6	2F	0,09
165M25	St	16	25,46	24,32	28	16,5	30,5	36	6	2F	0,11
185M25	St	18	28,65	27,51	32	20,0	30,5	36	6	2F	0,13
205M25	St	20	31,83	30,69	36	23,0	30,5	36	6	2F	0,17
215M25	St	21	33,42	32,28	38	24,0	30,5	38	6	2F	0,20
225M25	St	22	35,01	33,87	38	25,5	30,5	38	6	2F	0,22
245M25	St	24	38,20	37,06	42	27,0	30,5	38	6	2F	0,26
265M25	St	26	41,38	40,24	44	30,0	30,5	38	6	2F	0,32
285M25	St	28	44,56	43,42	48	30,5	30,5	38	6	2F	0,37
305M25	St	30	47,75	46,60	51	35,0	30,5	38	6	2F	0,42
325M25	St	32	50,93	49,79	54	38,0	30,5	38	8	2F	0,48
365M25	St	36	57,30	56,16	60	38,0	30,5	38	8	2F	0,59
405M25	St	40	63,66	62,52	71	38,0	30,5	38	8	2F	0,75
445M25	Al	44	70,03	68,89		38,0	30,5	40	8	2	0,32
485M25	Al	48	76,39	75,25		38,0	30,5	40	8	2	0,28
605M25	Al	60	95,49	94,35		50,0	30,5	40	8	2	0,44
725M25	Al	72	114,59	113,45		50,0	30,5	40	8	2	0,85

Material: Acero/Steel/Acier (St)
Material: Aluminio/Aluminium UNI 9006 - T6 (Al)

POLEAS DENTADAS HTD

HTD timing belt pulleys

Poulies dentées HTD

8M-20

mm

Paso 8

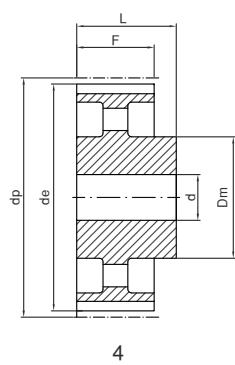
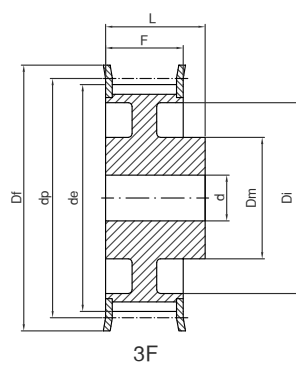
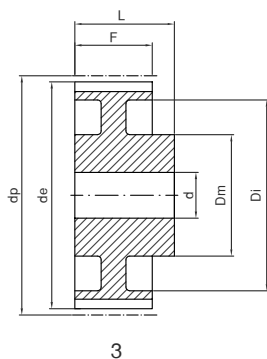
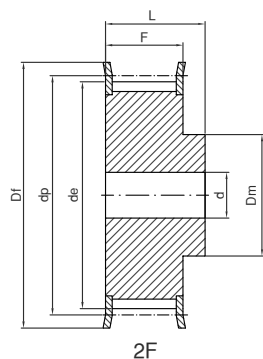
Pitch

Pas

Para correas de ancho 20

For belt width

Pour courroies largeur



Ref.	Material	Z	dp	de	Df	Dm	Di	F	L	d	Fig.	Kg.
228M20	St	22	56,02	54,65	60	43		28	38	12	2F	0,54
248M20	St	24	61,11	59,74	66	45		28	38	12	2F	0,65
268M20	St	26	66,21	64,84	71	48		28	38	12	2F	0,80
288M20	St	28	71,30	70,08	75	50		28	38	14	2F	0,88
308M20	St	30	76,39	75,13	83	55		28	38	14	2F	1,00
328M20	St	32	81,49	80,16	87	60		28	38	14	2F	1,20
348M20	St	34	86,58	85,21	91	66		28	38	14	2F	1,40
368M20	St	36	91,67	90,30	98	70		28	38	14	2F	1,60
388M20	St	38	96,77	95,39	103	75		28	38	14	2F	1,70
408M20	St	40	101,86	100,49	106	75		28	38	14	2F	1,85
448M20	St	44	112,05	110,67	119	75		28	38	14	2F	2,10
488M20	St	48	122,23	120,86	127	75		28	38	14	2F	2,50
568M20	St	56	142,60	141,23	148	80	116	28	38	14	3F	2,82
648M20	St	64	162,97	161,60	168	80	137	28	38	14	3F	3,22
728M20	St	72	183,35	181,97	192	80	158	28	38	14	3F	3,74
808M20	GG	80	203,72	202,35		90	180	28	38	14	3	3,78
908M20	GG	90	229,18	227,81		90	204	28	38	14	3	4,57
*1128M20	GG	112	285,21	283,83		90	254	28	38	18	4	
*1448M20	GG	144	366,69	365,32		90	336	28	38	20	4	
*1688M20	GG	168	427,81	426,44		100	400	28	38	20	4	
*1928M20	GG	192	488,92	487,55		100	460	28	38	20	4	

Material: Acero/Steel/Acier (St)
Material: Fundición/Cast iron/Fonte (GG)

POLEAS DENTADAS HTD

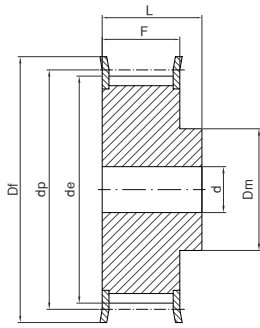
HTD timing belt pulleys
Poulies dentées HTD

5M-25

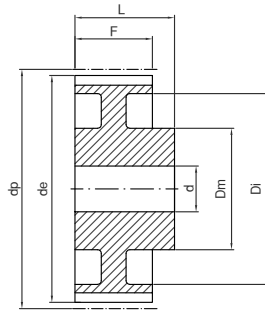
mm

Paso 8
Pitch 8
Pas 8

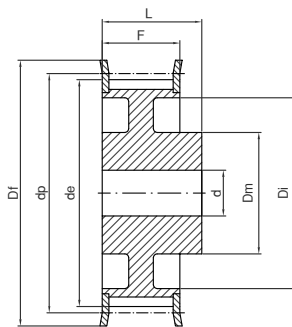
Para correas de ancho 30
For belt width 30
Pour courroies largeur 30



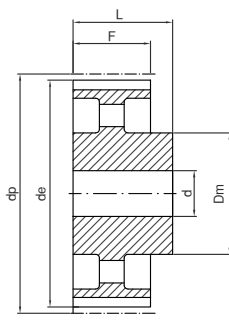
2F



3



3F



4

Ref.	Material	Z	dp	de	Df	Dm	Di	F	L	d	Fig.	Kg.
228M30	St	22	56,02	54,65	60	43		38	48	12	2F	0,75
248M30	St	24	61,11	59,74	66	45		38	48	12	2F	0,90
268M30	St	26	66,21	64,84	71	48		38	48	12	2F	1,10
288M30	St	28	71,30	70,08	75	50		38	48	14	2F	1,20
308M30	St	30	76,39	75,13	83	55		38	48	14	2F	1,32
328M30	St	32	81,49	80,16	87	60		38	48	14	2F	1,55
348M30	St	34	86,58	85,21	91	66		38	48	14	2F	1,80
368M30	St	36	91,67	90,30	98	70		38	48	14	2F	2,10
388M30	St	38	96,77	95,39	103	75		38	48	14	2F	2,30
408M30	St	40	101,86	100,49	106	75		38	48	14	2F	2,47
448M30	St	44	112,05	110,67	119	75		38	48	14	2F	2,95
488M30	St	48	122,23	120,86	127	75		38	48	14	2F	3,30
568M30	St	56	142,60	141,23	148	90	116	38	48	14	3F	4,02
648M30	St	64	162,97	161,60	168	90	137	38	48	14	3F	4,60
728M30	St	72	183,35	181,97	192	95	158	38	48	14	3F	5,41
808M30	GG	80	203,72	202,35		100	180	38	48	14	3	5,23
908M30	GG	90	229,18	227,81		100	204	38	48	14	3	6,42
1128M30	GG	112	285,21	283,83		100	254	38	48	18	4	8,12
1448M30	GG	144	366,69	365,32		100	336	38	48	20	4	10,36
1688M30	GG	168	427,81	426,44		100	400	38	48	20	4	12,37
1928M30	GG	192	488,92	487,55		100	460	38	48	20	4	14,31

Material: Acero/Steel/Acier (St)
Material: Fundición/Cast iron/Fonte (GG)

POLEAS DENTADAS HTD

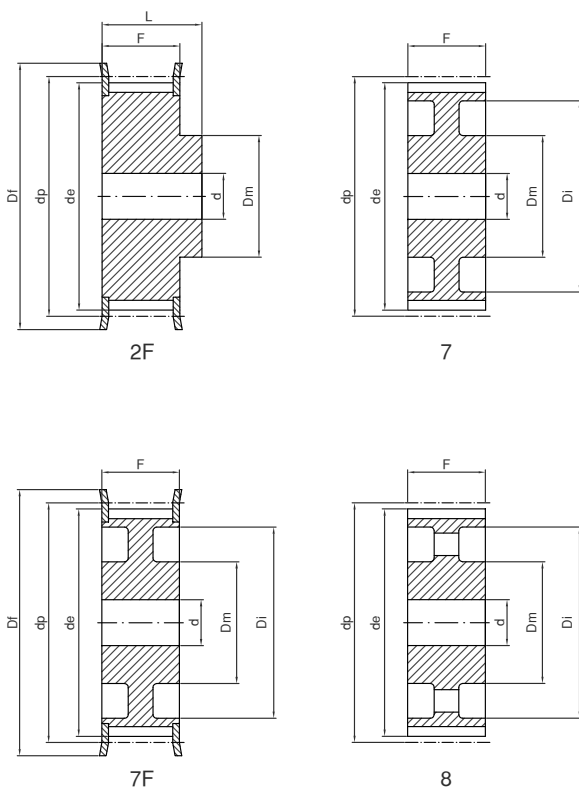
HTD timing belt pulleys

Poulies dentées HTD

8M-50 mm

Paso 8
Pitch
Pas

Para correas de ancho 50
For belt width
Pour courroies largeur



Ref.	Material	Z	dp	de	Df	Dm	Di	F	L	d	Fig.	Kg.
228M50	St	22	56,02	54,65	60	43		60	70	12	2F	1,10
248M50	St	24	61,11	59,74	66	45		60	70	12	2F	1,30
268M50	St	26	66,21	64,84	71	48		60	70	12	2F	1,60
288M50	St	28	71,30	70,08	75	50		60	70	14	2F	1,70
308M50	St	30	76,39	75,13	83	55		60	70	14	2F	2,00
328M50	St	32	81,49	80,16	87	60		60	70	14	2F	2,35
348M50	St	34	86,58	85,21	91	66		60	70	14	2F	2,80
368M50	St	36	91,67	90,30	98	70		60	70	14	2F	3,10
388M50	St	38	96,77	95,39	103	75		60	70	14	2F	3,30
408M50	St	40	101,86	100,49	106	75		60	70	14	2F	3,60
448M50	St	44	112,05	110,67	119	75		60	70	14	2F	4,40
488M50	St	48	122,23	120,86	127	75		60	70	14	2F	5,00
568M50	St	56	142,60	141,23	148	90	116	60	60	18	7F	5,68
648M50	St	64	162,97	161,60	168	100	137	60	60	18	7F	6,93
728M50	St	72	183,35	181,97	192	100	158	60	60	18	7F	7,95
808M50	GG	80	203,72	202,35		110	180	60	60	18	7	7,96
908M50	GG	90	229,18	227,81		110	204	60	60	18	7	9,20
1128M50	GG	112	285,21	283,83		110	254	60	60	18	8	12,16
1448M50	GG	144	366,69	365,32		110	336	60	60	20	8	15,68
1688M50	GG	168	427,81	426,44		120	400	60	60	20	8	18,99
1928M50	GG	192	488,92	487,55		130	460	60	60	20	8	24,09

Material: Acero/Steel/Acier (St)
Material: Fundición/Cast iron/Fonte (GG)

POLEAS DENTADAS HTD

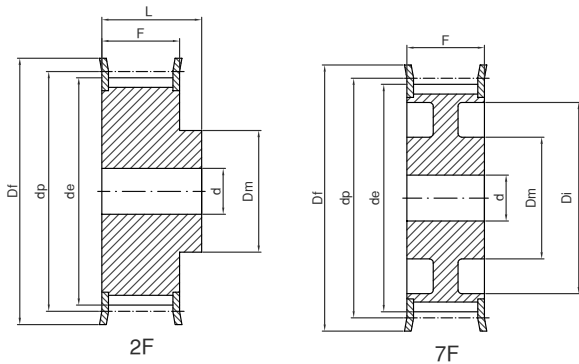
HTD timing belt pulleys

Poulies dentées HTD

8M-85 mm

Paso 8
Pitch
Pas

Para correas de ancho 85
For belt width
Pour courroies largeur



Material: Acero/Steel/Acier (St)
Material: Fundición/Cast iron/Fonte (GG)

Ref.	Material	Z	dp	de	Df	Dm	Di	F	L	d	Fig.	Kg.
228M85	St	22	56,02	54,65	60	43		95	105	12	2F	1,60
248M85	St	24	61,11	59,74	66	45		95	105	12	2F	1,95
268M85	St	26	66,21	64,84	71	48		95	105	12	2F	2,30
288M85	St	28	71,30	70,08	75	50		95	105	14	2F	2,60
308M85	St	30	76,39	75,13	83	55		95	105	14	2F	3,10
328M85	St	32	81,49	80,16	87	60		95	105	14	2F	3,70
348M85	St	34	86,58	85,21	91	66		95	105	14	2F	4,00
368M85	St	36	91,67	90,30	98	70		95	105	14	2F	4,70
388M85	St	38	96,77	95,39	103	75		95	105	14	2F	5,10
408M85	St	40	101,86	100,49	106	75		95	105	14	2F	5,40
448M85	St	44	112,05	110,67	119	75		95	105	14	2F	6,70
488M85	St	48	122,23	120,86	127	75		95	105	14	2F	7,20
568M85	St	56	142,60	141,23	148	90		95	105	18	2F	11,48
648M85	St	64	162,97	161,60	168	100	137	95	95	18	7F	11,02
728M85	St	72	183,35	181,97	192	100	158	95	95	18	7F	13,45
808M85	GG	80	203,72	202,35		110	180	95	95	20	8	12,36
908M85	GG	90	229,18	227,81		110	204	95	95	20	8	14,38
1128M85	GG	112	285,21	283,83		110	254	95	95	24	8	18,66
1448M85	GG	144	366,69	365,32		110	341	95	95	24	8	23,00
*1688M85	GG	168	427,81	426,44		120	400	95	95	24	8	
*1928M85	GG	192	488,92	487,55		130	460	95	95	24	8	

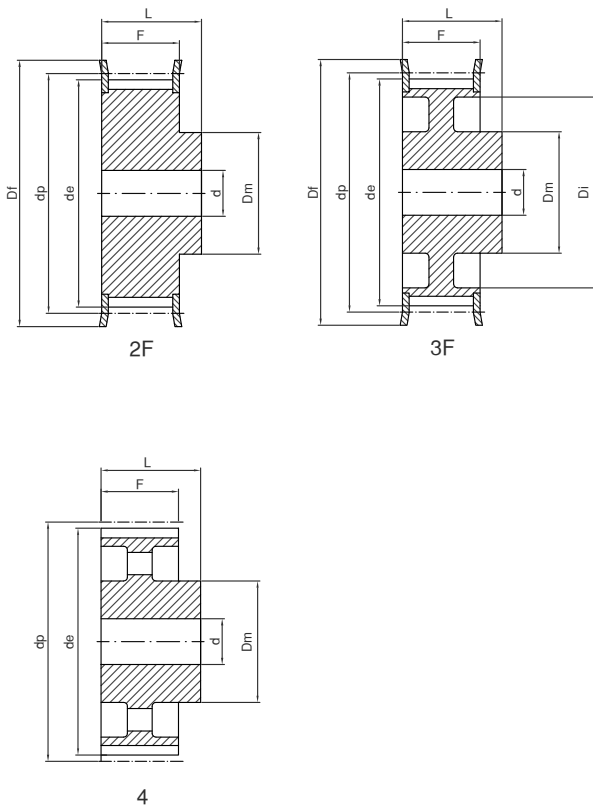
POLEAS DENTADAS HTD

HTD timing belt pulleys
Poulies dentées HTD

14M-40 mm

Paso 14
Pitch
Pas

Para correas de ancho 40
For belt width
Pour courroies largeur



Ref.	Material	Z	dp	de	Df	Dm	Di	F	L	d	Fig.	Kg.
2814M40	St	28	124,78	122,12	127	100		54	69	24	2F	4,80
3014M40	St	30	133,69	130,99	138	100		54	69	24	2F	5,60
3214M40	St	32	142,60	139,88	154	100		54	69	24	2F	6,20
3414M40	St	34	151,52	148,79	160	100		54	69	24	2F	6,90
3614M40	St	36	160,43	157,68	168	100		54	69	24	2F	7,70
3814M40	St	38	169,34	166,60	183	120		54	69	24	2F	8,90
4014M40	St	40	178,25	175,49	188	120		54	69	24	2F	9,80
4414M40	St	44	196,08	193,28	211	120		54	69	24	2F	12,00
4814M40	GG	48	213,90	211,11	226	135	170	54	69	24	3F	11,98
5614M40	GG	56	249,55	246,76	256	135	207	54	69	28	3F	14,01
6414M40	GG	64	285,21	282,41	296	135	240	54	69	28	3F	16,65
7214M40	GG	72	320,86	318,06		135	278	54	69	28	4	15,52
8014M40	GG	80	356,51	353,71		135	314	54	69	28	4	17,23
9014M40	GG	90	401,07	398,28		135	358	54	69	28	4	19,40
11214M40	GG	112	499,11	496,32		135	456	54	69	28	4	24,14
*14414M40	GG	144	641,71	638,92		135	600	54	69	28	4	
*16814M40	GG	168	748,66	745,87		135	706	54	69	28	4	
*19214M40	GG	192	855,62	852,82		135	813	54	69	28	4	

Material: Acero/Steel/Acier (St)
Material: Fundición/Cast iron/Fonte (GG)

POLEAS DENTADAS HTD

HTD timing belt pulleys

Poulies dentées HTD

14M-55 mm

Paso 14

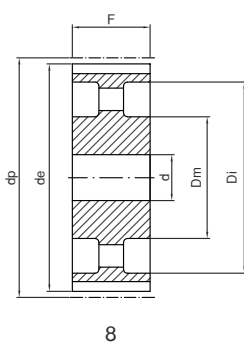
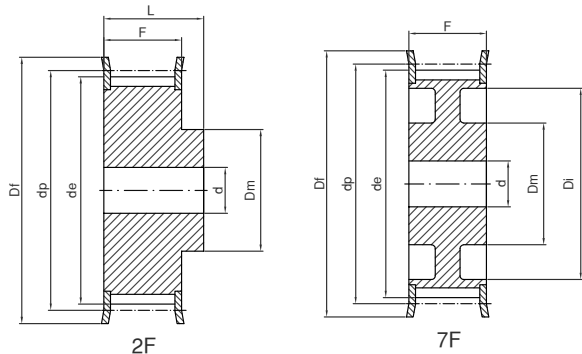
Pitch

Pas

Para correas de ancho 55

For belt width

Pour courroies largeur



Ref.	Material	Z	dp	de	Df	Dm	Di	F	L	d	Fig.	Kg.
2814M55	St	28	124,78	122,12	127	100		70	85	24	2F	5,70
3014M55	St	30	133,69	130,99	138	100		70	85	24	2F	7,10
3214M55	St	32	142,60	139,88	154	100		70	85	24	2F	7,90
3414M55	St	34	151,52	148,79	160	100		70	85	24	2F	9,33
3614M55	St	36	160,43	157,68	168	100		70	85	24	2F	10,49
3814M55	St	38	169,34	166,60	183	120		70	85	24	2F	12,11
4014M55	St	40	178,25	175,49	188	120		70	85	24	2F	13,30
4414M55	St	44	196,08	193,28	211	120		70	85	24	2F	16,12
4814M55	GG	48	213,90	211,11	226	135	170	70	70	24	7F	13,50
5614M55	GG	56	249,55	246,76	256	135	207	70	70	28	7F	15,78
6414M55	GG	64	285,21	282,41	296	135	240	70	70	28	7F	19,04
7214M55	GG	72	320,86	318,06		135	278	70	70	28	8	18,41
8014M55	GG	80	356,51	353,71		135	314	70	70	28	8	20,27
9014M55	GG	90	401,07	398,28		135	358	70	70	28	8	22,98
11214M55	GG	112	499,11	496,32		135	456	70	70	28	8	29,29
14414M55	GG	144	641,71	638,92		135	600	70	70	28	8	36,00
16814M55	GG	168	748,66	745,87		135	706	70	70	28	8	40,00
19214M55	GG	192	855,62	852,82		135	813	70	70	28	8	47,50

Material: Acero/Steel/Acier (St)
 Material: Fundición/Cast iron/Fonte (GG)

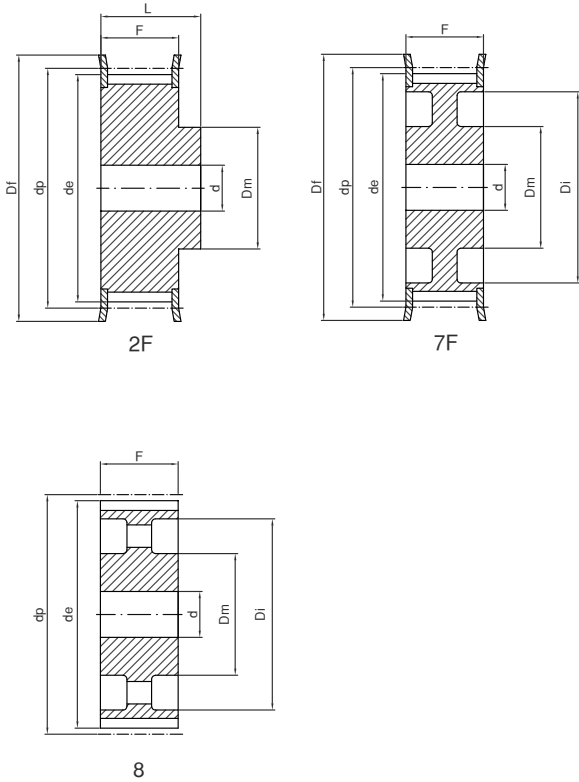
POLEAS DENTADAS HTD

HTD timing belt pulleys
Poulies dentées HTD

14M-85 mm

Paso 14
Pitch
Pas

Para correas de ancho 85
For belt width
Pour courroies largeur



Ref.	Material	Z	dp	de	Df	Dm	Di	F	L	d	Fig.	Kg.
2814M85	St	28	124,78	122,12	127	100		102	117	24	2F	8,77
3014M85	St	30	133,69	130,99	138	100		102	117	24	2F	10,13
3214M85	St	32	142,60	139,88	154	100		102	117	24	2F	11,65
3414M85	St	34	151,52	148,79	160	100		102	117	24	2F	13,15
3614M85	St	36	160,43	157,68	168	100		102	117	32	2F	14,48
3814M85	St	38	169,34	166,60	183	120		102	117	32	2F	16,62
4014M85	St	40	178,25	175,49	188	135		102	117	32	2F	18,84
4414M85	St	44	196,08	193,28	211	135		102	117	32	2F	22,86
4814M85	St	48	213,90	211,11	226	150		102	117	32	2F	27,58
5614M85	GG	56	249,55	246,76	256	150	207	102	102	32	7F	24,19
6414M85	GG	64	285,21	282,41	296	150	240	102	102	32	7F	28,57
7214M85	GG	72	320,86	318,06		150	278	102	102	32	8	28,26
8014M85	GG	80	356,51	353,71		150	314	102	102	32	8	31,00
9014M85	GG	90	401,07	398,28		150	358	102	102	32	8	35,00
11214M85	GG	112	499,11	496,32		150	456	102	102	32	8	43,50
14414M85	GG	144	641,71	638,92		150	600	102	102	32	8	50,00
16814M85	GG	168	748,66	745,87		150	706	102	102	32	8	63,00
19214M85	GG	192	855,62	852,82		165	813	102	102	32	8	76,00

Material: Acero/Steel/Acier (St)
Material: Fundición/Cast iron/Fonte (GG)

POLEAS DENTADAS HTD

HTD timing belt pulleys
 Poulies dentées HTD

14M-115

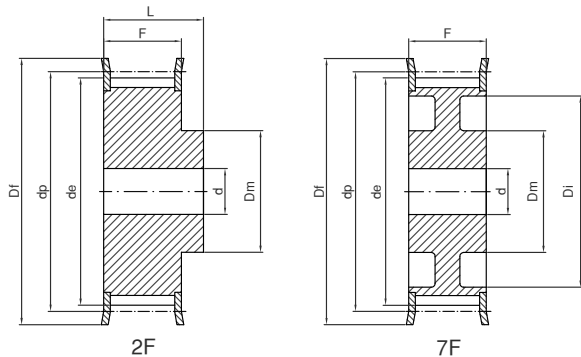
mm

Paso
 Pitch
 Pas

14

Para correas de ancho
 For belt width
 Pour courroies largeur

115



Ref.	Material	Z	dp	de	Df	Dm	Di	F	L	d	Fig.	Kg.
2814M115	St	28	124,78	122,12	127	100		133	148	32	2F	10,75
3014M115	St	30	133,69	130,99	138	100		133	148	32	2F	12,52
3214M115	St	32	142,60	139,88	154	100		133	148	32	2F	14,48
3414M115	St	34	151,52	148,79	160	100		133	148	32	2F	16,45
3614M115	St	36	160,43	157,68	168	120		133	148	32	2F	18,99
3814M115	St	38	169,34	166,60	183	120		133	148	32	2F	21,31
4014M115	St	40	178,25	175,49	188	135		133	148	32	2F	24,04
4414M115	St	44	196,08	193,28	211	140		133	148	32	2F	29,41
4814M115	St	48	213,90	211,11	226	150		133	148	32	2F	35,00
5614M115	St	56	249,55	246,76	256	150		133	148	32	2F	48,00
6414M115	GG	64	285,21	282,41	296	150	240	133	133	32	7F	36,00
7214M115	GG	72	320,86	318,06		150	278	133	133	32	8	36,00
8014M115	GG	80	356,51	353,71		150	314	133	133	32	8	40,00
9014M115	GG	90	401,07	398,28		150	358	133	133	32	8	45,00
11214M115	GG	112	499,11	496,32		150	456	133	133	32	8	55,50
14414M115	GG	144	641,71	638,92		165	600	133	133	32	8	71,00
16814M115	GG	168	748,66	745,87		165	706	133	133	32	8	83,00
19214M115	GG	192	855,62	852,82		165	813	133	133	32	8	96,00

Material: Acero/Steel/Acier (St)
 Material: Fundición/Cast iron/Fonte (GG)

POLEAS DENTADAS HTD

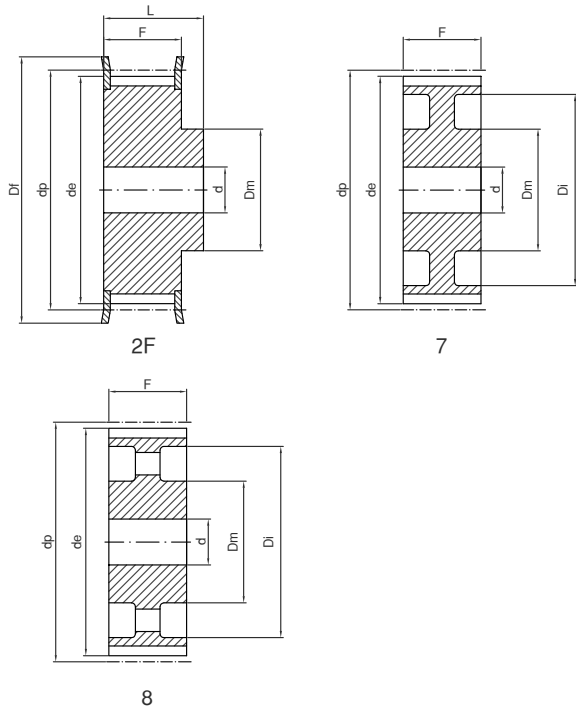
HTD timing belt pulleys

Poulies dentées HTD

14M-170 mm

Paso 14
Pitch 14
Pas 14

Para correas de ancho 170
For belt width 170
Pour courroies largeur 170



Ref.	Material	Z	dp	de	Df	Dm	Di	F	L	d	Fig.	Kg.
2814M170	St	28	124,78	122,12	127	100		187	202	32	2F	14,79
3014M170	St	30	133,69	130,99	138	100		187	202	32	2F	17,24
3214M170	St	32	142,60	139,88	154	100		187	202	32	2F	19,92
3414M170	St	34	151,52	148,79	160	100		187	202	32	2F	22,72
3614M170	St	36	160,43	157,68	168	120		187	202	32	2F	26,07
3814M170	St	38	169,34	166,60	183	135		187	202	32	2F	29,71
4014M170	St	40	178,25	175,49	188	140		187	202	32	2F	33,50
*4414M170	St	44	196,08	193,28	211	160		187	202	32	2F	
*4814M170	St	48	213,90	211,11	226	160		187	202	32	2F	
*5614M170	St	56	249,55	246,76	256	160		187	202	32	2F	
*6414M170	St	64	285,21	282,41	296	180		187	202	32	2F	
*7214M170	GG	72	320,86	318,06		180	278	187	187	32	7	
8014M170	GG	80	356,51	353,71		180	314	187	187	32	7	71,00
9014M170	GG	90	401,07	398,28		180	358	187	187	38	8	73,00
11214M170	GG	112	499,11	496,32		200	456	187	187	38	8	95,00
14414M170	GG	144	641,71	638,92		220	600	187	187	38	8	114,00
16814M170	GG	168	748,66	745,87		220	706	187	187	38	8	142,00
*19214M170	GG	192	855,62	852,82		220	813	187	187	38	8	

Material: Acero/Steel/Acier (St)
Material: Fundición/Cast iron/Fonte (GG)

* Fabricadas bajo pedido
Manufactured on request
Fabriqué sur demande